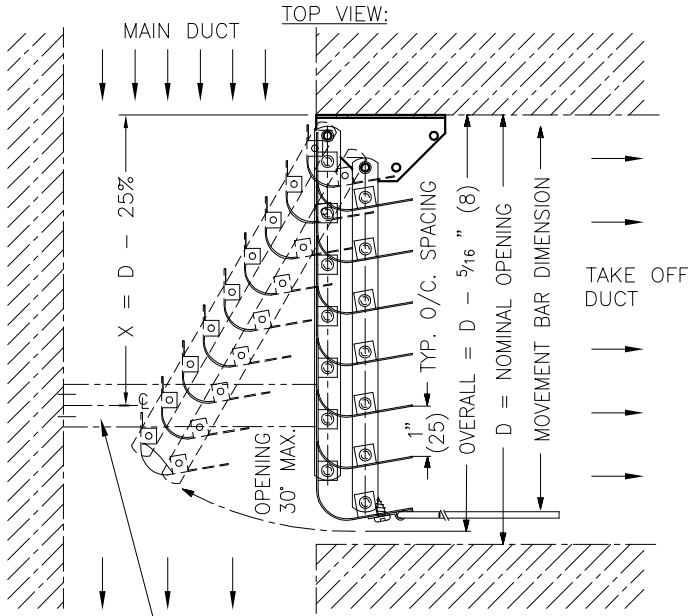


AE1 AIR VOLUME EXTRACTOR

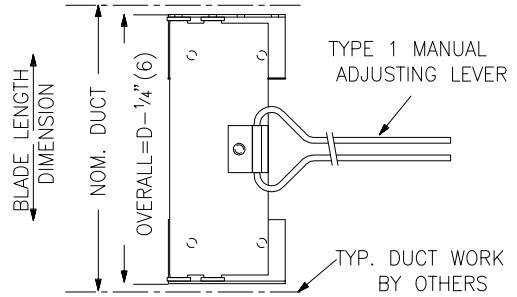


OPERATOR OPTIONS:

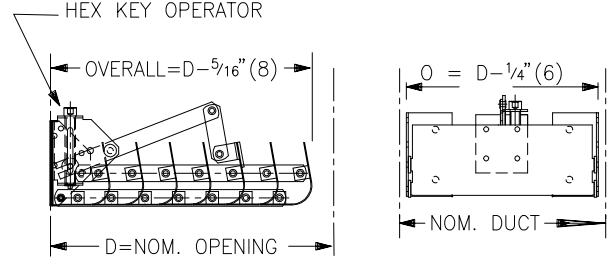
NO OPERATOR
NO OPERATOR SUPPLIED.

TYPE 1 MANUAL ADJUSTING LEVER

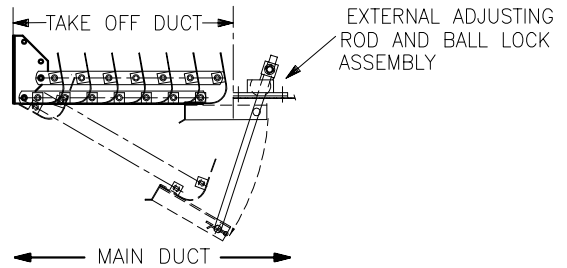
NOTE: TWO LEVERS ARE SUPPLIED WHEN BLADE LENGTH EXCEEDS 16" (406).



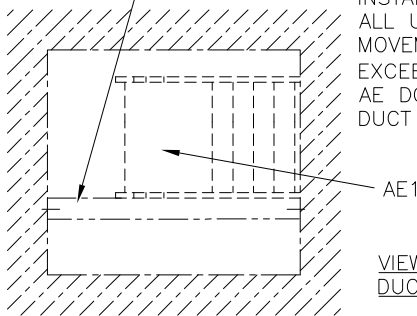
TYPE 3 HEX KEY OPERATOR
(ACCESSIBLE THROUGH THE FACE OF GRILLE)



TYPE 4 EXTERNAL ADJUSTING ROD
NOTE: 2 - ADJUSTING RODS ARE SUPPLIED WHEN BLADE LENGTH EXCEEDS 24" (610).



SKID RACK (SHELF) TO BE SUPPLIED & INSTALLED BY OTHERS ON ALL UNITS WHERE MOVEMENT BAR LENGTH EXCEEDS 18" (457) AND AE DOES NOT REST ON DUCT FLOOR.



SIZE LIMITATIONS:

MINIMUM BLADE LENGTH = 3" (76)
MINIMUM MOVEMENT BAR = 6" (152)

MAXIMUM SIZE LIMITS:

OPERATOR TYPE	MAXIMUM MOVEMENT BAR	MAXIMUM BLADE LENGTH	MAXIMUM AREA
1 - OR NONE SUPPLIED	36 (914)	36 (914)	4 SQ. FT.
3	30 (762)	16 (406)	2 SQ. FT.
4	60 (1524)	36 (914)	6 SQ. FT.

FINISH:

- B17 BLACK

MATERIAL:

- STEEL CONSTRUCTION

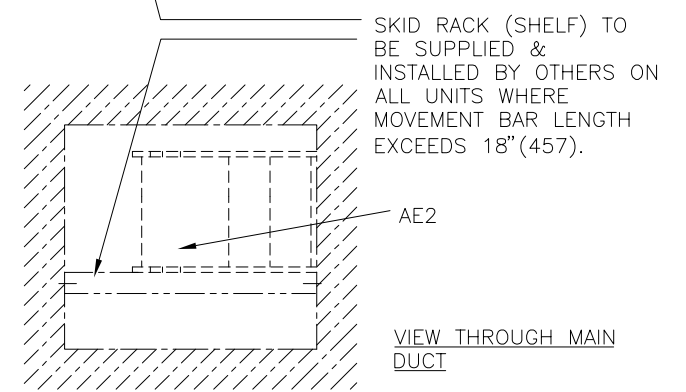
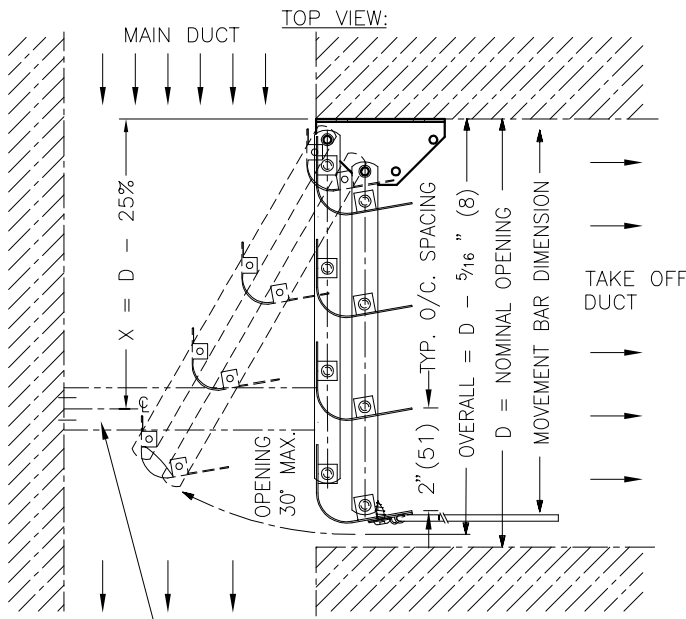
NOTES:

- THE SIZE OF EXTRACTOR MUST NOT EXCEED ANY OF THE LIMITATIONS LISTED ABOVE.
- THE TYPE 4 OPERATOR SHOULD BE USED WHEN EXTRACTOR AREA EXCEEDS 4 - SQ. FT.
- SPECIFY BLADES RUNNING IN LONG (L) OR SHORT (S) DIMENSION WHEN ORDERING
- FACTORY TOLERANCE: $\pm 1/32$ " (1)
- SEE INSTALLATION INSTRUCTION I100052

ALL METRIC DIMENSIONS () ARE SOFT CONVERTED. IMPERIAL DIMENSIONS ARE CONVERTED TO METRIC AND ROUNDED TO THE NEAREST MILLIMETER.

PROJECT:		PRICE [®]	
ENGINEER:		<i>MJ</i>	AE1
CUSTOMER:		210491	AIR VOLUME EXTRACTOR
SUBMITTAL DATE:	SPEC. SYMBOL:	2013/12/23	

AE2 AIR VOLUME EXTRACTOR



SIZE LIMITATIONS:

- MINIMUM BLADE LENGTH = 3" (76)
- MINIMUM MOVEMENT BAR = 6" (152)

MAXIMUM SIZE LIMITS:

OPERATOR TYPE	MAXIMUM MOVEMENT BAR	MAXIMUM BLADE LENGTH	MAXIMUM AREA
1 - OR NONE SUPPLIED	36 (914)	36 (914)	4 SQ. FT.
3	30 (762)	16 (406)	2 SQ. FT.
4	60 (1524)	36 (914)	8 SQ. FT.

FINISH:

- B17 BLACK

MATERIAL:

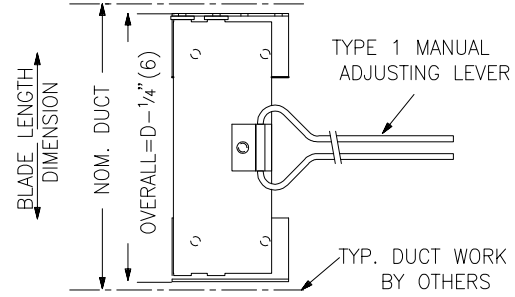
- STEEL CONSTRUCTION

OPERATOR OPTIONS:

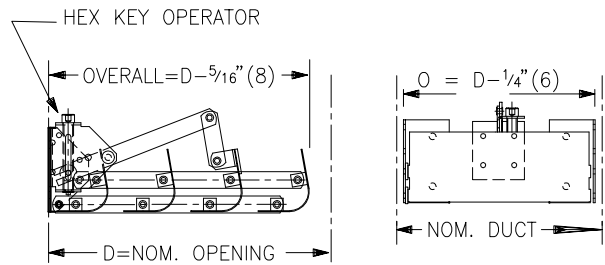
NO OPERATOR
NO OPERATOR SUPPLIED.

TYPE 1 MANUAL ADJUSTING LEVER

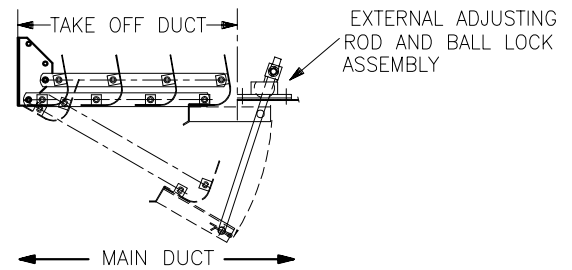
NOTE: TWO LEVERS ARE SUPPLIED WHEN BLADE LENGTH EXCEEDS 16" (406).



TYPE 3 HEX KEY OPERATOR
(ACCESSIBLE THROUGH THE FACE OF GRILLE)



TYPE 4 EXTERNAL ADJUSTING ROD
NOTE: 2 - ADJUSTING RODS ARE SUPPLIED WHEN BLADE LENGTH EXCEEDS 24" (610).



NOTES:

- THE SIZE OF EXTRACTOR MUST NOT EXCEED ANY OF THE LIMITATIONS LISTED ABOVE.
- THE TYPE 4 OPERATOR SHOULD BE USED WHEN EXTRACTOR AREA EXCEEDS 4 - SQ. FT.
- SPECIFY BLADES RUNNING IN LONG (L) OR SHORT (S) DIMENSION WHEN ORDERING
- FACTORY TOLERANCE: ± 1/32" (1)
- SEE INSTALLATION INSTRUCTION I100052

ALL METRIC DIMENSIONS () ARE SOFT CONVERTED. IMPERIAL DIMENSIONS ARE CONVERTED TO METRIC AND ROUNDED TO THE NEAREST MILLIMETER.

PROJECT:		PRICE®	
ENGINEER:		<i>mg</i>	AE2
CUSTOMER:		210492	AIR VOLUME EXTRACTOR
SUBMITTAL DATE:	SPEC. SYMBOL:	2013/12/23	